



CORDÉE DES ALPES

HOTEL & RESIDENCE VERBIER

★ ★ ★ ★ SUPERIOR



Cordée des Alpes is an intimate and relaxing refuge with an exceptional environment dedicated to your service and offering the finest facilities.

Cordée's design reflects the Alpine environment and human experience which make Verbier so unique.

After days of exhilarating outdoor activities, enjoying a cocktail while listening to music next to the fire place in the lounge is a treat.

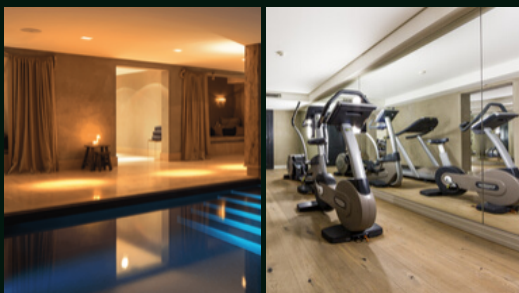
Restaurant La Cordée

Elegant dining offering 'a la carte' menu, serving local and international cuisine.

Collaborating with local producers is one of our priorities. Our chef Fabrice Taulier selects many of his ingredients directly from our farmer friends in Valais and the rest of Switzerland.



Spa and Fitness



True temple of wellbeing, the Spa La Cordée takes your senses to Nirvana after a couple of breath strokes in the vast indoor swimming pool.

Conference rooms

We offer 3 modular conference rooms, that can welcome up to 22 people for private cocktail parties and banquets and up to 40 people for meetings and conferences.



For more images go to



hotelcordee.com



[cordeedesalpes](https://www.instagram.com/cordeedesalpes)

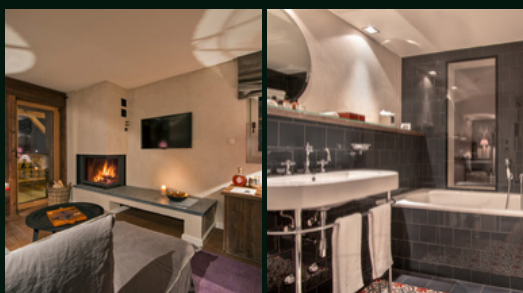


Suite Prestige

Facing south with a surface area of 60 m², these suites offer authentic luxury overlooking the Alps. The spacious south-facing lounge, complete with fireplace, is a perfect environment for daydreaming. Quiet and separate from the lounge, the bedroom is north-facing.

Elegance room

With a surface area of 55 m² the south-facing Elegance rooms provide space and comfort perfectly suited to relaxation. They have a comfortable and cosy living area. The lounge is not separate. The room can come with either a double bed or twin beds.

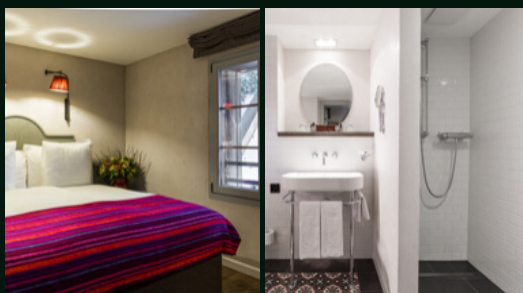


Deluxe room

With a surface area of 43 m², the Deluxe rooms come as a long, narrow unit some of which feature a fireplace. Separated by a corridor, the lounge is south-facing while the bedroom is north-facing.

Superior room

With a surface area of 28 m² and a view over the Alps, the south-facing these rooms come with a double bed or single beds, providing a truly cosy environment.



Comfort room

With a surface area of 18 m², the north-facing Comfort Rooms provide intimacy and elegance. They do not come with a balcony and are ideal for single occupancy.

Facilities include free WiFi, TV, phone, iPad, luxury goose-down duvet, safe, minibar, coffee machine, kettle.



Verbier

Switzerland

